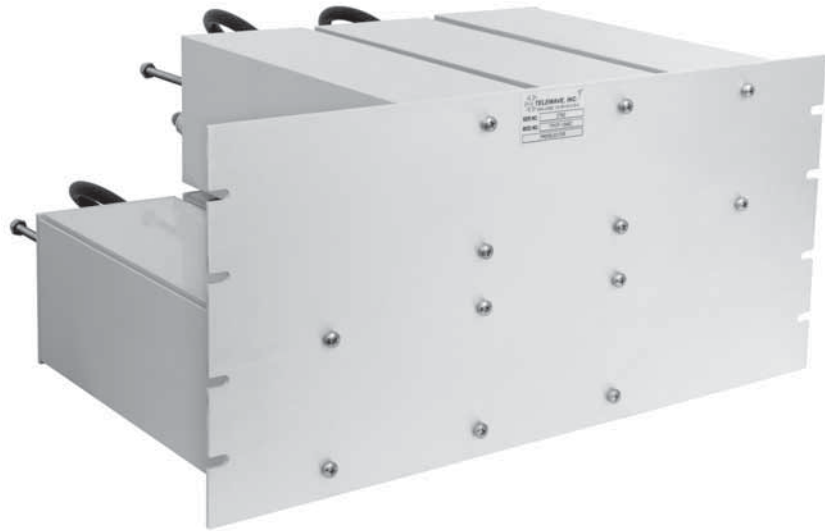


TPCP-1446C COMPACT VHF PRESELECTOR

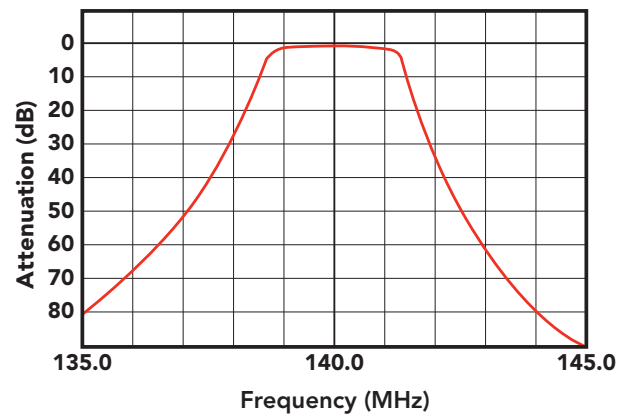
The TPCP-1446C offers high performance in a compact design for the 135-151 MHz VHF band.

Six square, pass-reject cavities provide greater than 80 dB attenuation at +/- 5 MHz, with a bandpass of 2.2 MHz or less, and insertion loss of 2.5 dB or less.

The custom-extruded 4" cavities allow horizontal rack mounting on a standard 19" rack, with rack height of only 8.75".



TYPICAL RESPONSE CURVES



SPECIFICATIONS - TPCP-1446C	
Frequency range	135-151 MHz
Bandpass (max)	2.2 MHz
Attenuation at +/- 5 MHz	80 dB
Insertion loss (typ)	2.5 dB
Power input (max)	350 watts
Impedance (nom) / VSWR (max)	50 ohms / 1.5:1
Temperature range	-30°C to +70°C
Number of cavities / size	6 / 4"
Connectors	N Female, UHF (opt.)
Dimensions (HWD) in. (cm) (Tuners fully extended)	8.75 x 19 x 18 (22.2 x 48.3 x 45.7)
Mounting	19" rack mount
Finish	Alodine / Gray acrylic enamel
Weight lb. (kg)	36.5 (16.6)