

## T-1530M / T-1560M MEDIUM POWER VHF ISOLATORS

Telewave T-1530M and T-1560M Medium Power Isolators protect transmitters from reflected power, and provide maximum intermodulation suppression. A dual-stage unit can provide as much as 70 dB isolation for adjacent channel suppression. The low loss characteristic of the Telewave design insures maximum power transfer to the antenna system.

All Telewave isolators are manufactured and tested in our own plant to the highest quality standards. These isolators handle up to 115 watts of continuous power, with several different load options. One or two removeable 60 watt loads are included in the basic configuration. Higher power load options can be specified with an order.

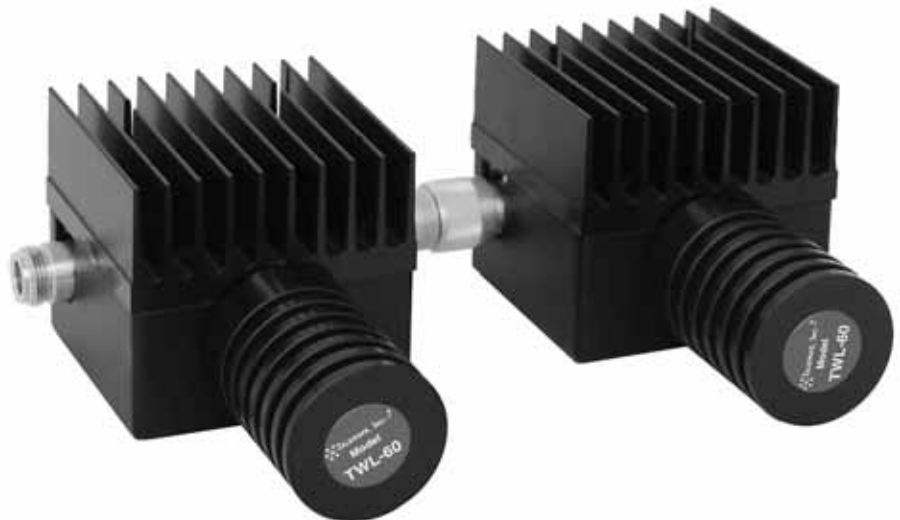
Telewave isolators are magnetically compensated to allow mounting on any surface without significant detuning. Circulation direction may be specified for special mounting situations. To prevent radiation of harmonics, a cavity or harmonic filter should be placed between the isolator and the antenna.

**NOTE: ISOLATORS ARE FACTORY TUNABLE ONLY, AND ARE BUILT FOR A SPECIFIC FREQUENCY.**

ISOLATION DATA IS MEASURED WITH POWER APPLIED.



**T-1530M SINGLE ISOLATOR**



**T-1560M DUAL ISOLATOR**

SPECIFICATIONS		T-1530M	T-1560M
Frequency band	148-174 MHz	Isolator type	Single
Input power (continuous)	115 watts	Isolation (typ. / min)	35 dB / 30 dB
VSWR (typ.)	1.3:1	Insertion loss (typ.)	0.5 dB
Impedance	50 ohms	Load(s) included	(1) 60 W
Connectors	N Female	Dimensions (incl. loads) in.	4 x 5.4 x 2.75
Temperature range	-30°C to +60°C	cm	10.2 x 13.7 x 7
		Weight lb. (kg)	3 (1.4)
			6 (2.7)