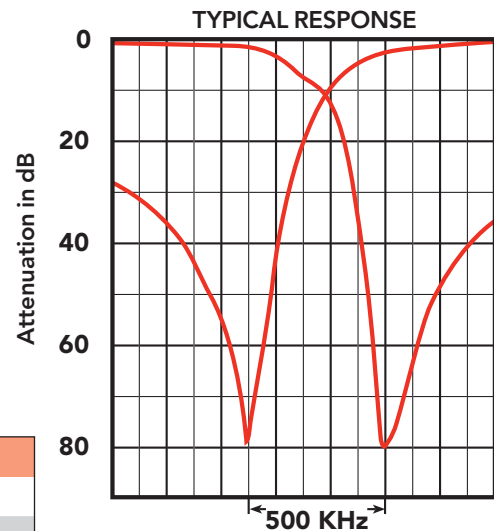
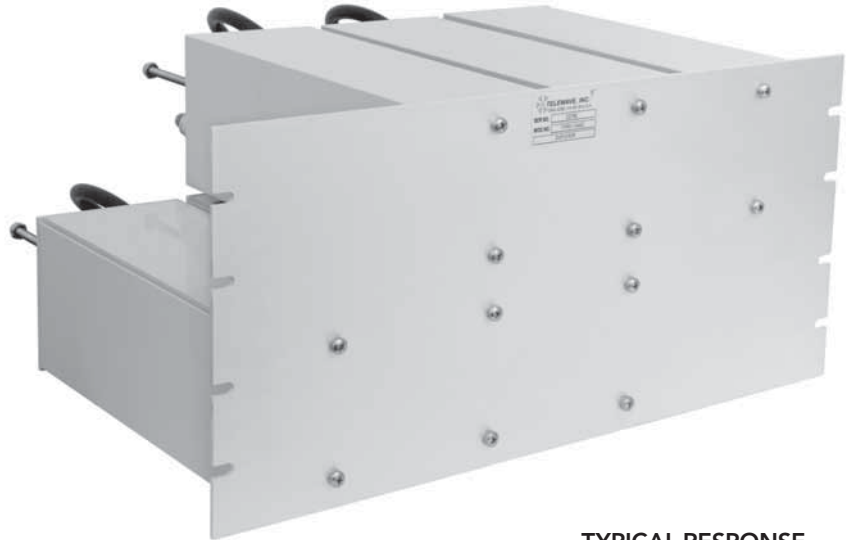


## TPRD-1546C

### COMPACT PASS / REJECT DUPLEXER

The TPRD-1546C offers high performance in a compact design for the 148-174 MHz VHF band.

Custom extruded 4" cavities allow horizontal rack mounting. Three pass-reject sections in the transmit and receive paths provide 80 dB isolation at 500 KHz, with a 350 watt power rating, and insertion loss of 2.5 dB or less. The duplexer fits a standard 19" rack, with rack height of 8.75".



ELECTRICAL SPECIFICATIONS	
Tuning range	148-174 MHz
Frequency separation (min)	500 KHz
Maximum input power	350 watts
Insertion loss TX / RX to ant.	2.5 dB
TX noise suppression at RX (typ)	80 dB at 500 KHz
RX isolation at TX (typ)	80 dB at 500 KHz
VSWR (max)	1.5:1
Temperature range	-30°C to +70°C
Number of cavities	(6) - 4"
MECHANICAL SPECIFICATIONS	
Mounting	19" Rack mount
Dimensions (HWD) in. (cm)	8.75 x 19 x 15 (22 x 48 x 38)
Connectors	N or UHF female
Finish	Acrylic enamel
Net weight lb. (kg)	36 (16.3)