

TIN KNOCKER

August 2017

TK EDGE NOTCHER

INSTRUCTIONS & PARTS DIAGRAM



TAAG INDUSTRIES CORP.

1550 SIMPSON WAY, ESCONDIDO, CA 92029

Tel: (800) 640-0746 Fax: (760) 727-9948

Website: www.tinknocker.com Email: info@taagind.com

SAFETY PRECAUTIONS

- 1. Never use a machine or tool for anything other than its intended purpose. Use the proper tool and equipment for the task.**
- 2. Do not operate the machine in excess of its rated capacity.**
- 3. Always turn off machine and remove from power source before making adjustments.**

WARRANTY

All new machines are sold with a one-year limited warranty, on factory defective parts. The warranty is limited to the original user. TAAG Machinery Co. at its option, will repair, replace or refund the purchase price of any part, tool or machine that fails during the warranty period. TAAG Machinery Co. will pay normal shipping charges for replacement parts. After 90 days from date of purchase, all express or overnight delivery charges are the responsibility of the customer. Purchaser must deliver to TAAG Machinery Co., at the address below, any written claim, with proof of original purchase. Replacement parts will be invoiced to purchaser and credit issued when the failed part is delivered to TAAG Machinery Co. Removal, reinstallation or replacement parts shall be at purchasers' / user's expense. Failure due to improper use of the machine voids the warranty.

NOTE:

1. This machine has been tested and adjusted prior to shipment, but can and often does require readjustment due to vibration and bouncing during transport. These are procedures with which you, as a user, should be familiar, as you will use them repeatedly over the life use of the machine.
2. If you have difficulty in performing these procedures, we are here to support you. Call us at: (800) 640-0746.
3. Opening rolls (for Philipsburg Lock) are consumable items and not subject to warranty.

TAAG INDUSTRIES CORP.

“The Tin Knocker People”

1550 Simpson Way

Escondido, CA 92029

Tel: (800) 640-0746 Fax: (760) 727-9948

Website: www.tinknocker.com • Email: info@taagind.com

Adjusting space between notches

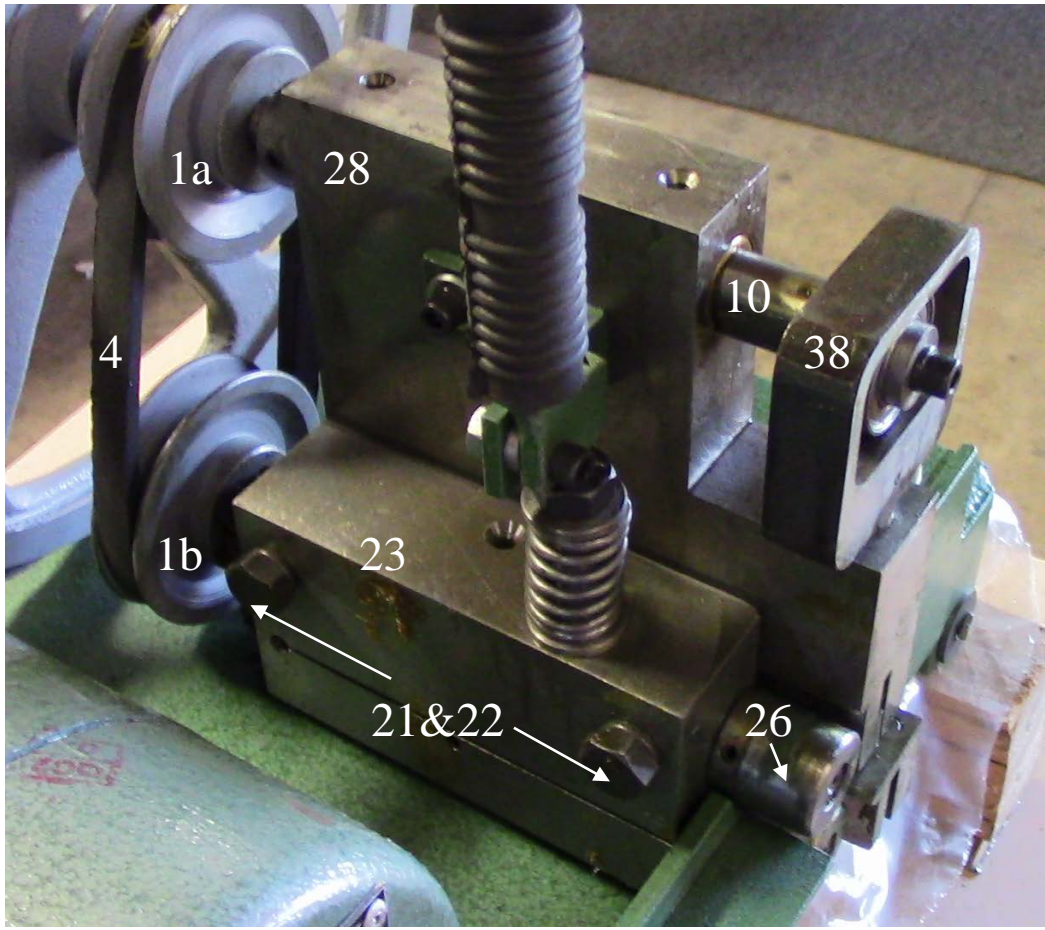
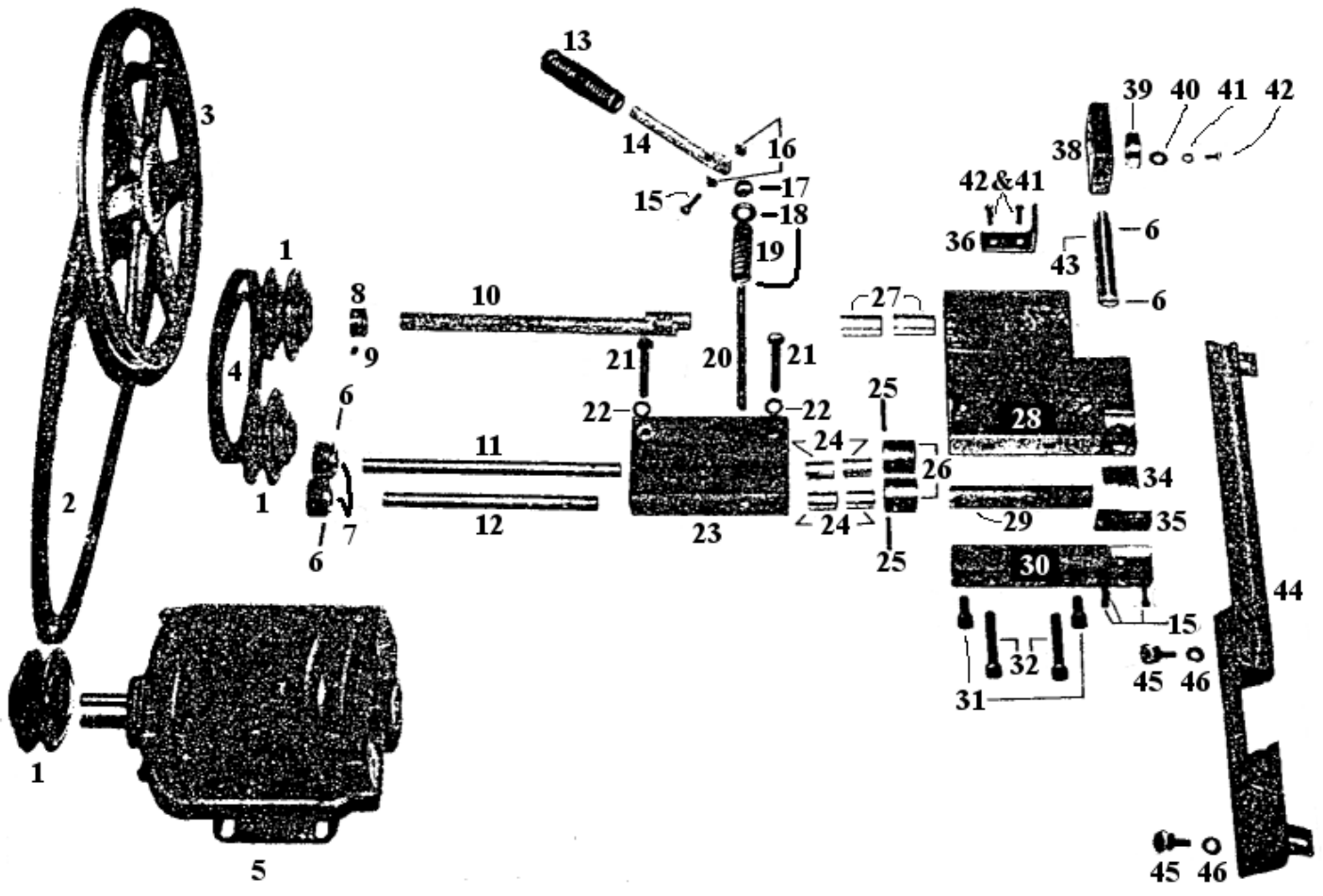
- The adjustable pulleys have variable widths and are comprised of two separate halves. Adjusting must be done by trial and error. There is no exact method for controlling final outcome.
- **More space between notches** → **Decrease topmost pulley width.**
- **Less space between notches** → **Increase topmost pulley width.**
- **The bottom pulley must also be adjusted to maintain belt tension when necessary.**
- To adjust the pulley width:
 - Turn the machine off and remove power source
 - Loosen one or both set screws
 - Tighten or loosen the pulley's halves by rotating the halves with respect to the shaft.
 - Tighten set screws.

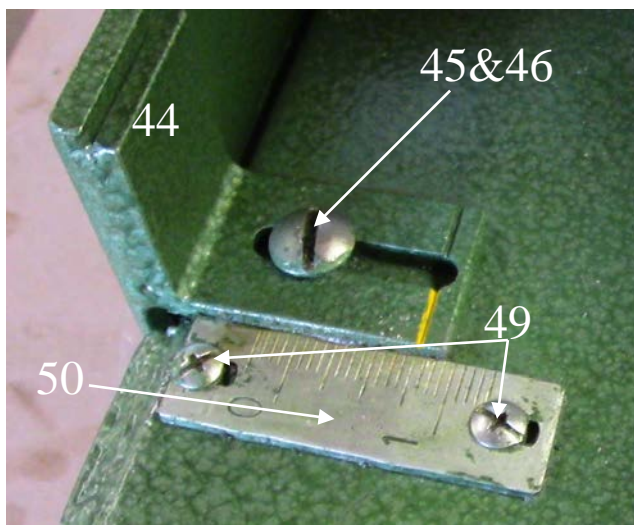
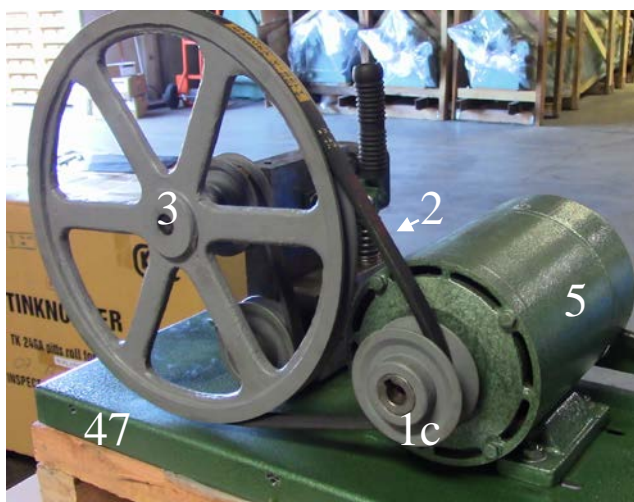
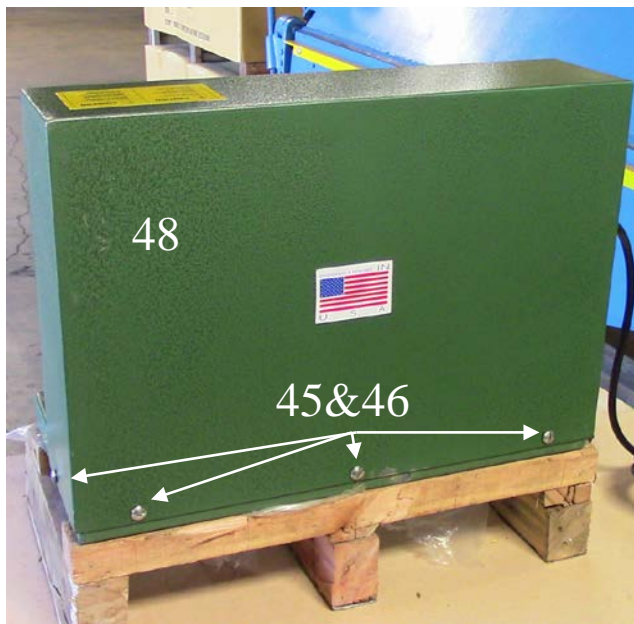
Adjusting Notch Length

- Loosen the Round Head Screws (45) that secure the Gauge Rail (44) to the Base (48). There is one screw on either side.
- Adjust the Gauge Rail (44) with respect to the Rail Adjustment Reference (49).
- Tighten the Round Head Screws (45)

Lubrication

- Grease can be added to lubricate the punch by a grease gun to the capped port underneath the bearing yoke (38).
- Oil may also be added to the counter-sunk holes on top of the Punch Guide Block (28) and the Drive Roll Bearing Block (23).





Fine No.	Part No.	QTY	Part Name
1a	EN001	1	Adjustable Pulley 5/8" bore
1b	EN002	1	Adjustable Pulley 1/2" bore
1c	EN003	1	Adjustable Pulley 1/2" bore with key
2	EN004	1	"V" belt Small
3	EN005	1	12" Pulley
4	EN006	1	"V" belt Large
5	EN007	1	Electric Motor
6	EN008	4	Spring Pin Small
7	EN009	2	Spur Gear
8	EN010	1	Collar
9	EN011	2	Collar Set Screw
10	EN012	1	Eccentric Shaft
11	EN013	1	Upper Drive Shaft (1/2" x 9")
12	EN014	1	Lower Drive Shaft (1/2" x 7.5")
13	EN015	1	Handle Grip
14	EN016	1	Release Arm
15	EN017	4	Socket Head Bolt with smooth shank
16	EN018	1	7/16" Hex Nut
17	EN019	1	17 mm Hex Nut
18	EN020	2	Spring collar insert (top & bottom)
19	EN021	1	Spring
20	EN022	1	Spring Stud
21	EN023	2	17mm Hex Head Cap Screw
22	EN024	4	3/8" Split Lock Washer
23	EN025	1	Drive Roll Bearing Block
24	EN026	4	1/2" I.D. Bearing
25	EN027	2	Spring Pin Large
26	EN028	2	Feed Roller
27	EN029	2	5/8" I.D. Bearing
28	EN030	1	Punch Guide Block
29	EN031	1	Spacer
30	EN032	1	Die Support
31	EN033	2	17mm Hex Head Cap Screw
32	EN034	2	Socket Head Screw
34	EN035	1	Punch
35	EN036	1	Die Plate
36	EN037	1	Release Arm Bracket
38	EN038	1	Bearing Yoke

39	EN039	1	Cage bearing (Koyo 6202Z)
40	EN040	1	Washer
41	EN041	3	Lock Washer
42	EN042	3	Socket Head Screw
43	EN045	1	(Part is welded to Bearing yoke)
44	EN044	1	Gauge Rail
45	EN045	7	Round Head Screw
46	EN046	7	1/4" Tooth Lock Washer
47	EN047	1	Base
48	EN048	1	Hood
49	EN049	2	Rail Adjustment Scale
50	EN050	4	Round Head Screws
Not shown	EN051	1	Power cable sleeve
52	EN052	1	Power Switch
53	EN053	4	1/2" bolt (motor)
54	EN054	4	1/2" nut (motor)
55	EN055	4	Dock washer (motor)
56	EN056	4	Washer (motor)
Not shown	EN057	1	Spacer Plate (not shown)
16	EN058	1	Thick washer
Not shown	EN059	2	Washer (not shown)
Not shown	EN060	1	Grease port (not shown)